

Geospatial Open Data – bridging the gap between provision and use through the cloud-based GIS platform ArcGIS Online

con terra GmbH, 19.11.2013

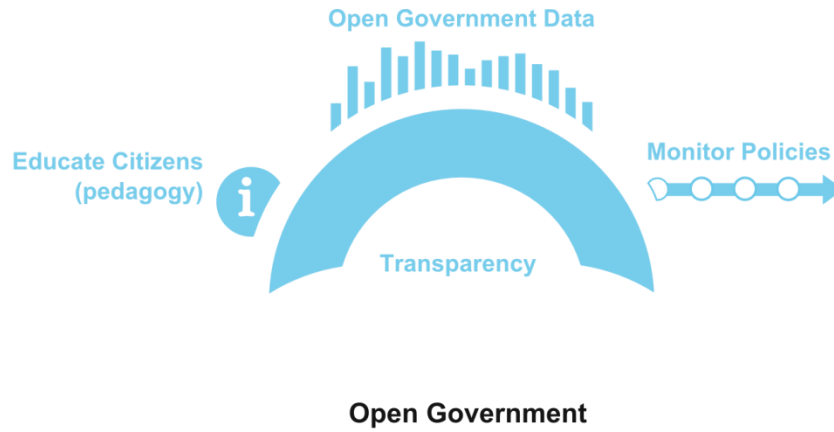
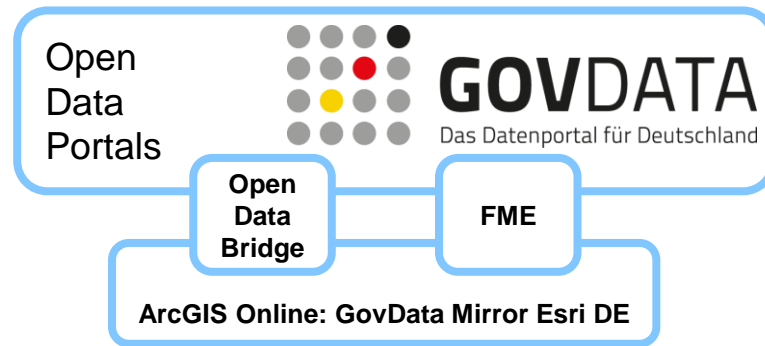
Thore Fechner

2nd International Open Data Dialog, Berlin

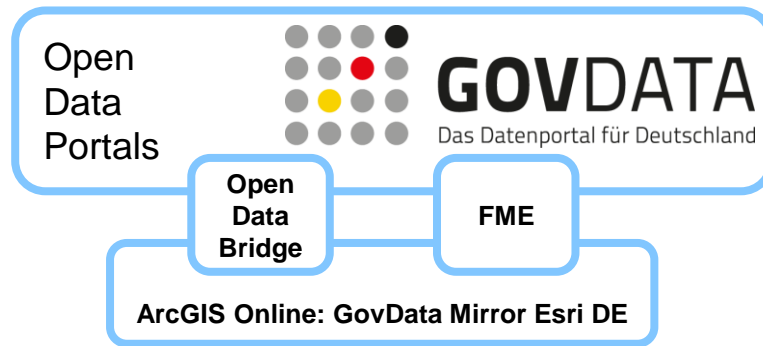
con terra

- **Founded in 1993**
- **Spin-off of the University of Münster, Institute of Geoinformatics**
- **Co-founder of 52°North Initiative for Open Source Software GmbH in 2004**
- **Company of the Esri Deutschland Group since 2006**
- **Gold Partner of the Esri Inc. Partner Network**
- **Platinum Partner of Safe Software**
- **More than 110 employees**
- **Head office: Münster, Germany**



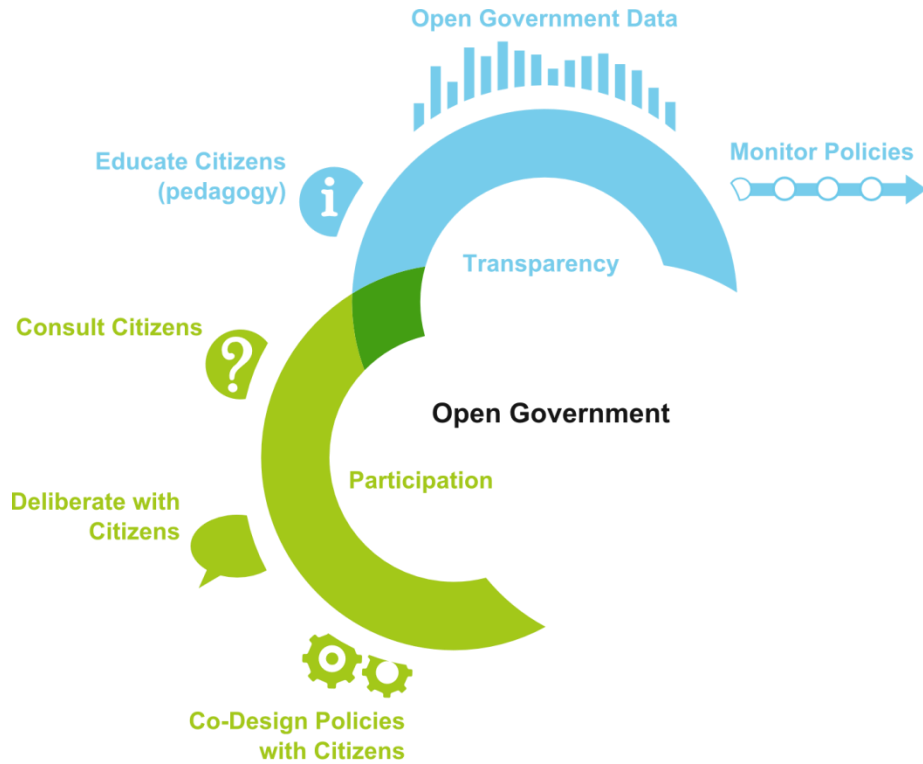


This is a modified version of "Open government diagram"
 © 2012 by Arnel Le Coz & Cyril Lage, used under a Creative Commons Attribution license:
<http://creativecommons.org/licenses/by/3.0/deed.en>

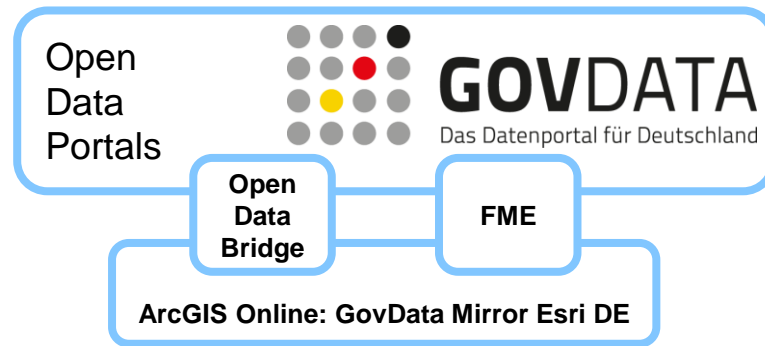


Open Data Apps

map.apps + ArcGIS Online

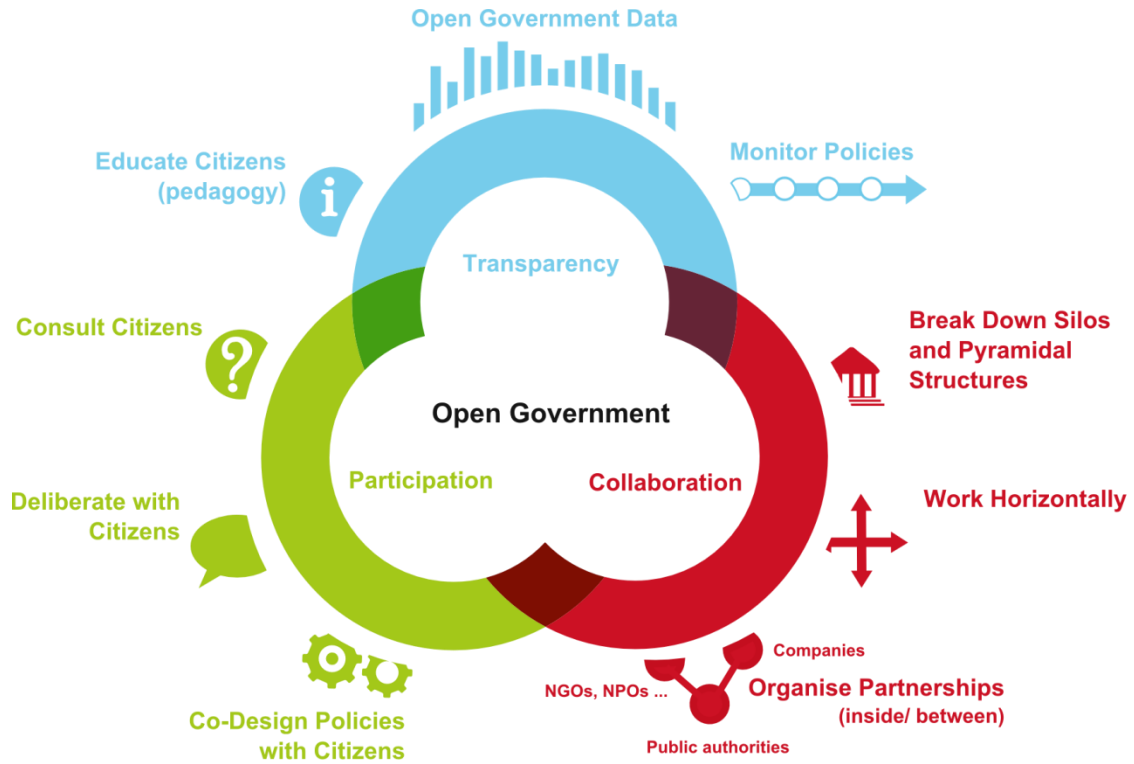


This is a modified version of "Open government diagram"
 © 2012 by Arnel Le Coz & Cyril Lage, used under a Creative Commons Attribution license:
<http://creativecommons.org/licenses/by/3.0/deed.en>



Open Data Apps

map.apps + ArcGIS Online



Geo Data Atlases

map.apps + ArcGIS Online

This is a modified version of "Open government diagram"
 © 2012 by Arnel Le Coz & Cyril Lage, used under a Creative Commons Attribution license:
<http://creativecommons.org/licenses/by/3.0/deed.en>

Open Data Bridge

- **Functionality**

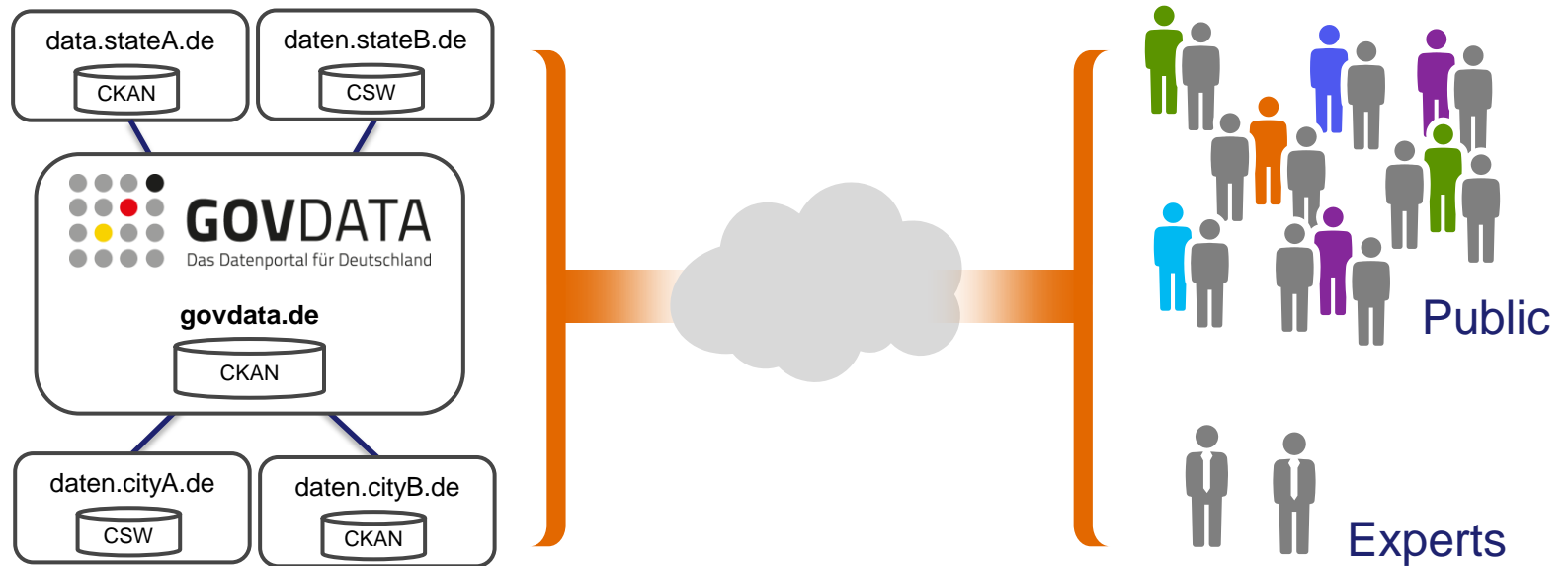
- > Automatic synchronization of Open Data Catalogues & ArcGIS Online
- > Transfers services or data like WMS or KML

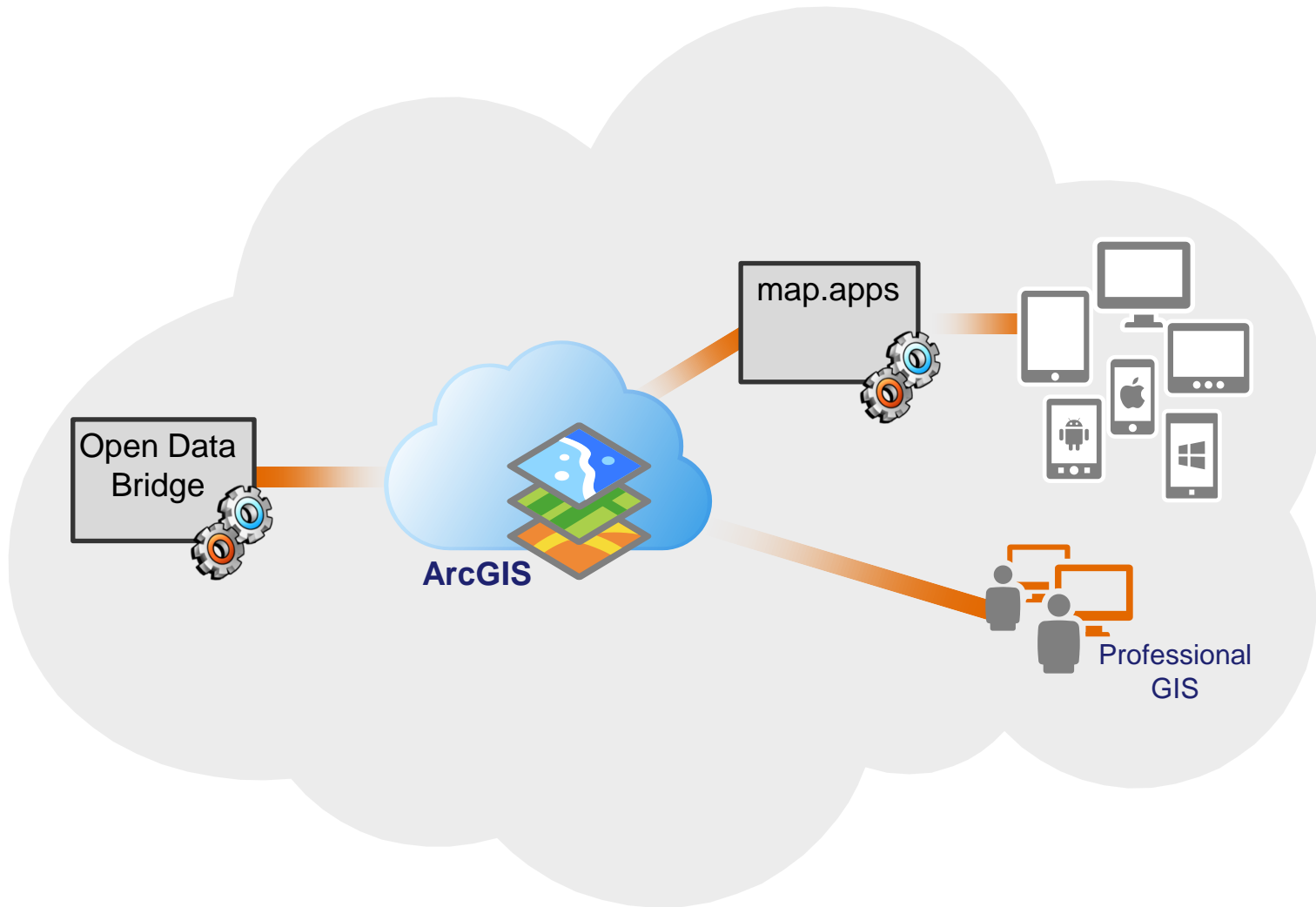
- **Our Service**

- > Technology and professional services to valorize Open Data
- > Offer and integrate the Open Data Bridge
- > Development of Geo Open Data strategies and solutions
- > Performant, high-available basemaps from ArcGIS Online

- **Your Advantage**

- > Efficient and simple valorization of Open Data
- > Creating surplus values by exposing Open Data through ArcGIS Online
- > Simple and intuitive use and access of Open Data within maps for everybody:
GIS experts or interested citizens
- > Open Data Bridge is Open Source (Apache License V2.0) and available on GitHub!





Open Data + FME + AGOL + map.apps = consumable Information

• Workflow „Construction Zones Münster“

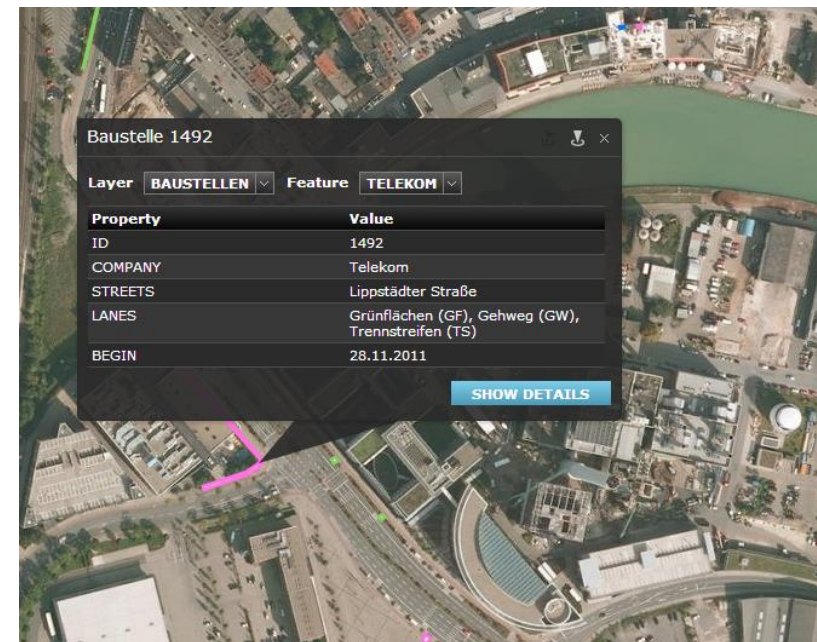


• Our Service

- > Provision of shape data from GovData in ArcGIS Online
- > Mobile friendly access through map.apps
- > Daily, automatic updates

• Your Advantage

- > Reaching users in a meaningful way
- > Simple daily export of expert-data – now accessible for everyone



Showtime!

- **Open Data Bridge**
 - > [GitHub Esri DE](#) & [GitHub Esri Inc](#)
- **GovData Mirror AGOL**
- **Example Bus Routes (Rostock)**
 - > GovData [Bus Routes](#)
 - > AGOL [Bus Routes](#)
- **Example Storm Tide (Rostock)**
 - > GovData [Storm Tide](#)
 - > AGOL [Storm Tide](#)
- **Example Construction Zones Münster**
 - > GovData [Construction Zones](#)
 - > AGOL [Construction Zones](#)
 - > map.apps [Construction Zones](#)

Thank you for your attention!



con terra –
Gesellschaft für Angewandte
Informationstechnologie

Martin-Luther-King-Weg 24
48155 Münster
Telefon +49 251 747 45 0
Telefax +49 251 747 45 2111

